



LONG LIFE AND DURABLE...

MANUFACTURER OF

PREMIUM QUALITY

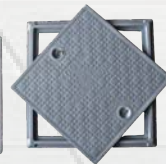
FRP MANHOLE COVERS



WIDE RANGE OF SIZES ARE AVAILABLE

MFG BY: YOGI PLAST

मजबूती बेमिसाल... चले सालों साल



CALL US NOW



971 222 8391 | 972 516 7546 |



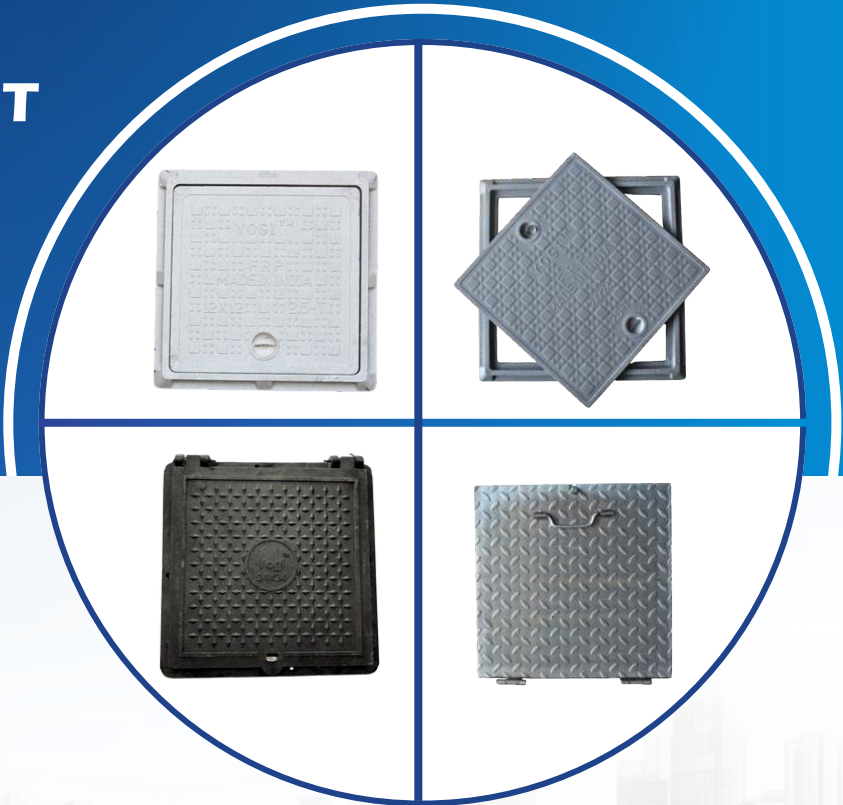
www.yogiplast.com



TRUST US FOR YOUR

FRP NEEDS

MFG BY: YOGI PLAST



www.yogiplast.com

CALL US NOW

971 222 8391 | 972 516 7546



LONG LIFE AND DURABLE..

ABOUT US.

We YOGI PLAST are manufacturing FRP Products Since 2015. We Have started to develop the product in very small-scale industries. We hand strug-gled to develop quality products for almost 9 to 10 months. After the long-strug-bulk production and today we are making 500 pieces daily.





OUR MISSION

OUR VISION

Our vision is to be in the list of the top rated FRP Manhole Cover manufacturers company in the world.

OUR MISSION

To exceed our customers expectations in quality, delivery and cost through continuous improvement and customer interaction.

OUR CORE VALUES

Yogi Plast Strongly founded on pillars of Integrity, Quality, Innovation and Customer Service.



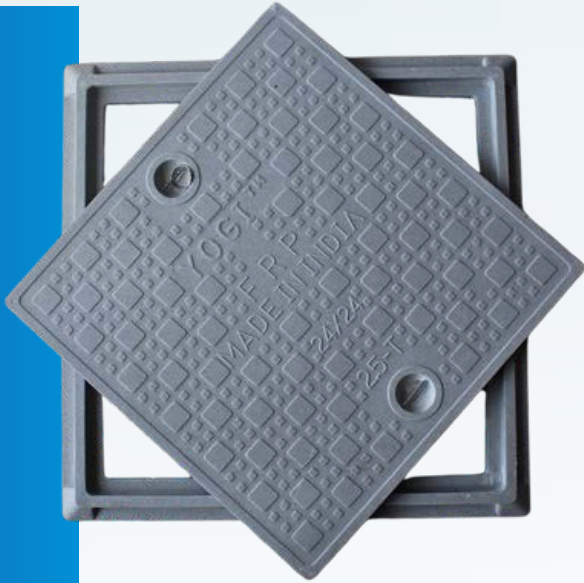
MANUFACTURING PROCEDURE

We Manufacture in our factory by our skilled staff. We are starting with the basics like sorting the raw material, then mixing it properly and then using special machinery to make it, and in the next stage. A layer of ROWIN will be placed in. And will be the final layer of glass fiber, it will be pressed by special machinery and it is the final stage of product development

- FRP Manhole Cover
- PVC Manhole Cover
- MSGI Manhole Cover



FRP MANHOLE COVER



PRODUCT APPLICATION

- FRP manhole covers are durable, lightweight, and corrosion-resistant alternatives to cast iron covers, suitable for various applications.
- FRP manhole covers can be designed with a decorative finish, making them more aesthetically pleasing for use in landscaped areas or public spaces.

PVC HEAVY MANHOLE



PRODUCT APPLICATION

- PVC heavy manhole covers are used for high-load applications due to their strength.
- Roads and Highways: They are ideal for storm water drainage systems along roads and highways because they can withstand the weight of heavy traffic.
- Industrial Facilities: In industrial settings, especially chemical plants, PVC's resistance to corrosion makes them suitable for covering access points to underground utilities.

MSGI MANHOLE COVER



PRODUCT APPLICATION

- MSGI manhole covers are mainly used for drainage, covering access points to underground systems like sewers and storm drains.
- MS: Mild Steel - This is the most common material used for these types of manhole covers due to its affordability and durability.
- GI: Galvanized Iron - A coating of zinc is applied to the mild steel for additional rust resistance.
- Therefore, an MSGI manhole cover is essentially a galvanized mild steel cover used for drainage access points.

FRP ALL SIZE WITH PACKAGING DETAIL

Sr. No.	Frame Size		Clear Opening		Weight/ Piece	Packing Size
	Inch	MM	Inch	MM		
1	10 x 10	250 x 250	7.8 x 7.8	195 x 195	2.180	10
2	12 x 12	300 x 300	10 x 10	250 x 250	3.170	05
3	12 x 18	300 x 450	10 x 16	250 x 400	5.300	05
4	15 x 15	380 x 380	12 x 12	300 x 300	5.00	07
5	18 x 18	450 x 450	16 x 16	400 x 400	8.00	04
6	18 x 24	450 x 600	14 x 20	350 x 510	10.200	03
7	21 x 21	535 x 535	18 x 18	450 x 450	10.200	04
8	24 x 24	600 x 600	20 x 20	510 x 510	14.00	02
9	28 x 28	710 x 710	24 x 24	610 x 610	20.00	01
10	30 x 30	760 x 760	26 x 26	660 x 660	25.00	01
11	21 x 28	535 x 710	18 x 24	450 x 610	13.00	02
12	24 x 30	610 x 760	19 x 25	495 x 645	17.00	01
13	18 x 36	460 x 915	13 x 31	345 x 800	15.500	01
14	24 x 36	610 x 915	19 x 31	495 x 800	21.00	01
15	36 x 36	915 x 915	30 x 30	760 x 760	38.00	01

COLORS ARE AVAILABLE

Black White Ivory Grey Blue Green Terracotta etc...



AS PER COSTUMER REQUIRE

PVC MAINHOLE COVER ALL SIZE WITH PACKAGING DETAIL

Sr. No.	Size In Inches	Weight (approx.)	Packing Size
1	12" x 12"	1,5 Kg	10
2	18" x 18"	4,0 Kg	04
3	18" x 24"	6.0 Kg	04
4	24" x 24"	8.0 Kg	04
5	27" x 27"	10.5 Kg	03
6	30" x 30"	14 Kg	02



PRODUCT APPLICATION

ELD 2.5T/5.0T

Suitable for use within residential and institutional complexes with pedestrian but occasional light motor vehicle traffic. These covers are also used for inspection chambers.

Care Should be taken in handling of manhole covers and frames to prevent damage of edges and corners.

M.S.G.I. MAINHOLE COVER ALL SIZE WITH PACKAGING DETAIL

Sr. No.	Size In Inches	Weight (approx.)	Packing Size
1	12" x 12"	3.3 Kg	5
2	15" x 15"	4.5 Kg	5
3	18" x 18"	6.7 Kg	5
4	18" x 24"	8.5 Kg	3
5	21" x 21"	8.5 Kg	4
6	24" x 24"	11 Kg	3
7	27" x 27"	14.5 Kg	2
8	30" x 30"	16 Kg	2
9	36" x 36"	24 Kg	1
10	24" x 36"	16 Kg	1
11	21" x 27"	11 Kg	2

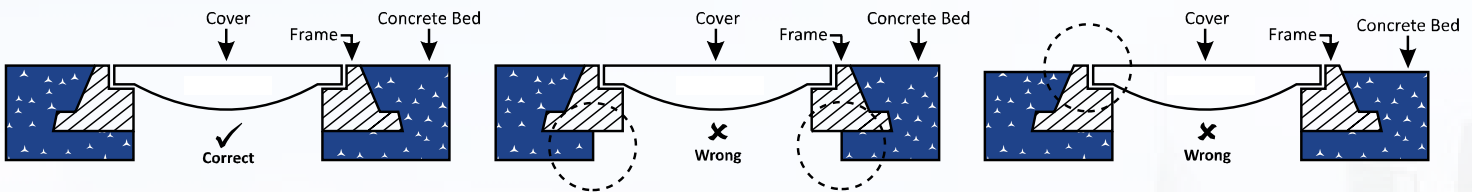


INSTALLATION PROCEDURE FOR

INSTALLATION INSTRUCTION :

Care Should Be taken in handling of manhole cover

- 1. Make sure that top level of the frame should match the road.
- 2. Prepare concrete bed considering height of the frame.
- 3. Frame should be allowed to set in concrete for a minimum time of 48 hrs. before its use.
- 4. Please note frame is not load bearing and therefore has to be completely supported from all sides.



Water Proof, Weather Proof And Non Corrosive
जलरोधक, मोसम रोधक, जंगरोधक



Burglar Proof
चोरी की कोइ संभावना नहि



High Strength to Weight Ratio
कम वजन मे उच्च शक्ति



Light Weight
वजन मे हलका



Thermal & Electrical Non Conductivity
गरमी और बिजली रोधक



Zero Scrap Value
शून्य स्क्रैप वेल्यु



Easy Handling
सरल हेन्डलींग



Chemical & Slip Resistance
केमीकल रोधक और फीसलन अवरोधक



Long Life
लर्बी आयु



YOGI PLAST PRESENCE IN INDIA & GLOBAL MARKET

MFG BY: YOGI PLAST



UPTO 3 TO 5 TON LOAD BEARING CAPACITY





LONG LIFE AND DURABLE...

thank you

